




# Solar Product Catalog

2025

**seral**

ALUMINUM EXTRUSIONS



The background of the entire page is a close-up, high-angle photograph of numerous aluminum extrusions. These extrusions are arranged in a grid-like pattern, with some in the foreground being sharp and clear, while others in the background are blurred, creating a sense of depth. The extrusions have a complex, multi-faceted cross-section. The lighting is bright, highlighting the metallic texture and the geometric shapes of the profiles.

# About Our Company

## A Brief Story About The Company

SERAL, founded in 2001 in Istanbul, is a supplier of aluminum extrusions, parts, and components, serving a diverse range of industries in both domestic and international markets. As a family-owned business currently managed by the second generation, SERAL specializes in 6000 series aluminum extrusions and custom aluminum components and systems. Our products are widely utilized across various sectors, and we have established a strong reputation as a dependable supplier committed to the highest international quality standards. Our corporate offices and partner manufacturing facility are both based in Istanbul - Turkey.

# What We Do

## Aluminum Extrusions

At Seral, we specialize in the production of aluminum extrusions, parts and components. Our products are utilized across a wide range of industries, and we have earned a reputation as a trusted supplier committed to upholding the highest international quality standards.

## Industries

We currently supply a diverse range of industries, including solar, windows, doors, bath enclosures, automotive, construction, industrial, marine, furniture, and decoration, among others. Our corporate offices and partner manufacturing facility are both located in Istanbul - Turkey.



# Vision

Our goal is to become one of Turkey's leading exporters of aluminum extrusions by driving sustainable and consistent growth. We aim to deliver preferred products of exceptional quality, competitive pricing, and significant value to our customers and business partners.

# Mission

01

Provide constant product quality to customers through our implemented quality assurance systems of our manufacturing and distribution channels.

02

Constantly improve our supply chain management to ensure always on-time and reliable delivery standards.

03

Invest and constantly train our employees to ensure constant improvement of all departments of our company.

04

Growth of our business partners and customers in all branches to establish a secure and large ecosystem of stability of our supply chain.



# How We Operate

## Quality Policy

We believe in long-term success and consistency by delivering high-quality products to our customers.

## Our Values

Our customers come first and it is our mission to satisfy our customers through reliable services, stable quality and fair prices.

## Standards

All stages of production and distribution are assessed and certified accordance with international quality standards.

## Environment

We act on the most sufficient way to lower emissions, reduce waste and increase recycling as much as possible throughout our operations.

## Growth

Our company continues to grow rapidly by offering reliable and result-oriented solutions and products to our valued business partners.

## Human Resources

We support our valuable employees through continuous trainings for the goal of having an effective and motivated organization.



# Production Capabilities



## Extrusion

Our extrusion press lines can extrude with a wide range of aluminium profiles with three press lines. Our production capabilities include 6000 series alloys. The extrusion production is in compliance with DIN 12020-2 tolerance.

Our press lines have the following dimensions:

2800MT 9" (228MM)  
1650MT 7" (178MM)  
1320MT 6" (152MM)  
700MT 4" (110MM)

## Powder Coating

Our electrostatic powder coating line is equipped with the latest technology. We offer all standard RAL colors as well as special custom color profiles. We ensure a quality control process to ensure perfect surface finishes. Our powder coating line operates under Qualicoat quality standards.

## Anodizing

The anodizing process increases and improves the surface aesthetics and endurance of our aluminum profiles. We are able to anodize in various tones and colors including in natural, black, gold, brown color range. The anodizing process is in compliance and operates with quality certification via State of the Art Technology Lab and Qualanod license.

## Mechanical Machining

Our mechanical fabrication processes allows us to customize all type of aluminium extrusions and components.

Solar Frame Production  
CNC machining  
Drilling & Punching  
Cutting & Bending





**Manufacturing Plant**



**Production Line**



**Extrusion Line**



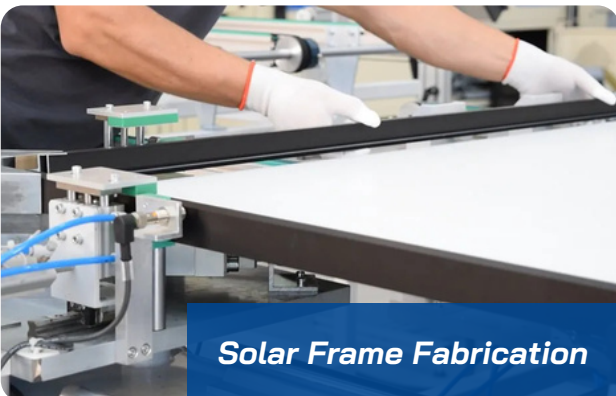
**Powder Coating**



**Anodizing**



**Fabrication Workshop**

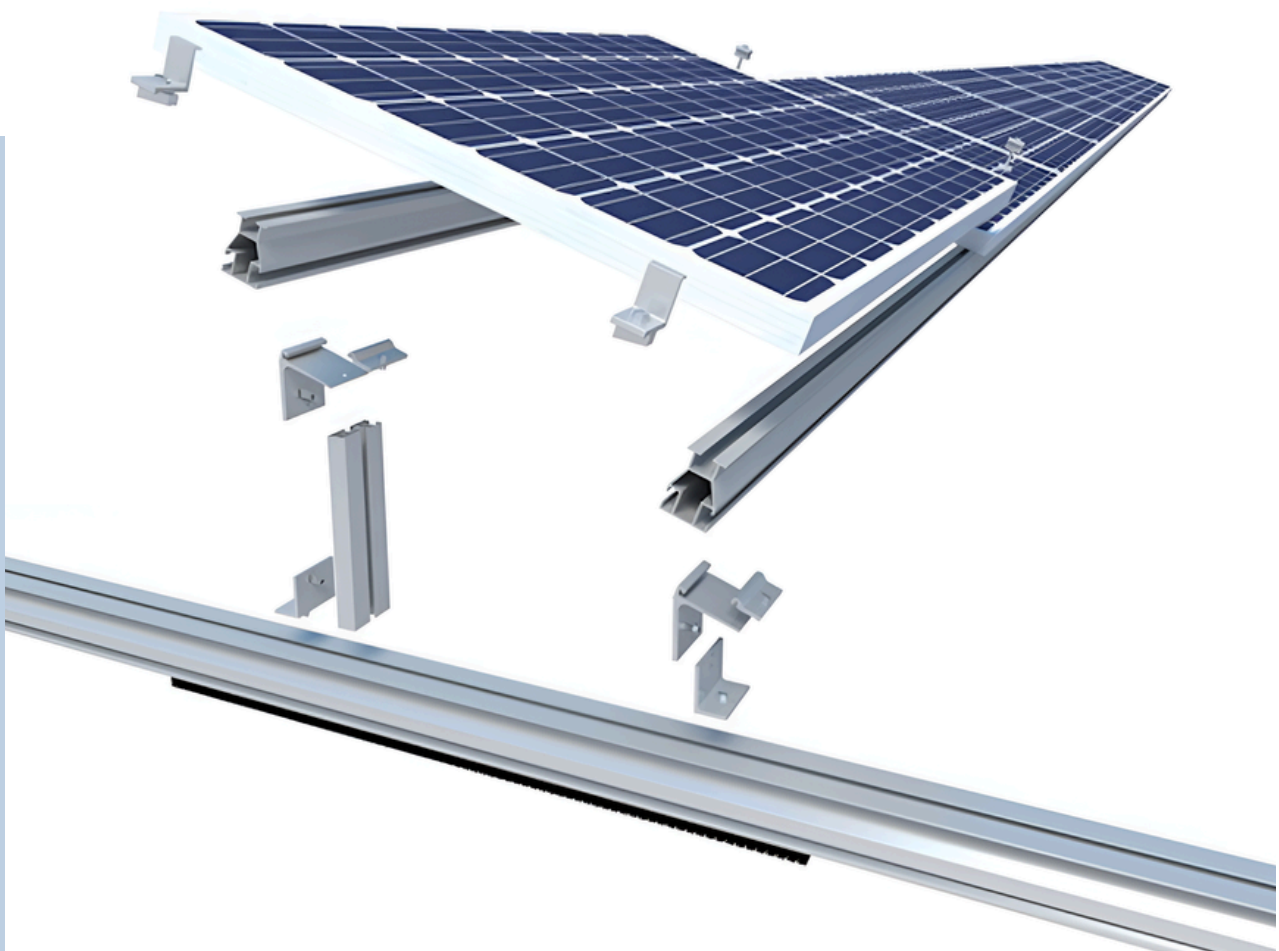


**Solar Frame Fabrication**



**Mechanical Fabrication**

# Solar Mounting Components







# Custom Mounting Systems

- Seral is specialized in the manufacturing of custom solar mounting systems for solar brands. We are able to manufacture railing systems, mounting components and frames
- Seral is able to manufacture systems for all roof types
- The components stand out with its economical, fast, easy and safe features
- Solar mounting components produced from EN AW-6063 aluminum alloy with T66 thermal
- Manufactured as extremely resistant and strong against snow, wind and earthquake loads
- Our advanced production capabilities allow us to create fully customized systems tailored to meet the specific requirements and needs of our clients

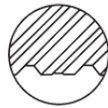


## Mounting Rail Profiles

Sandwich



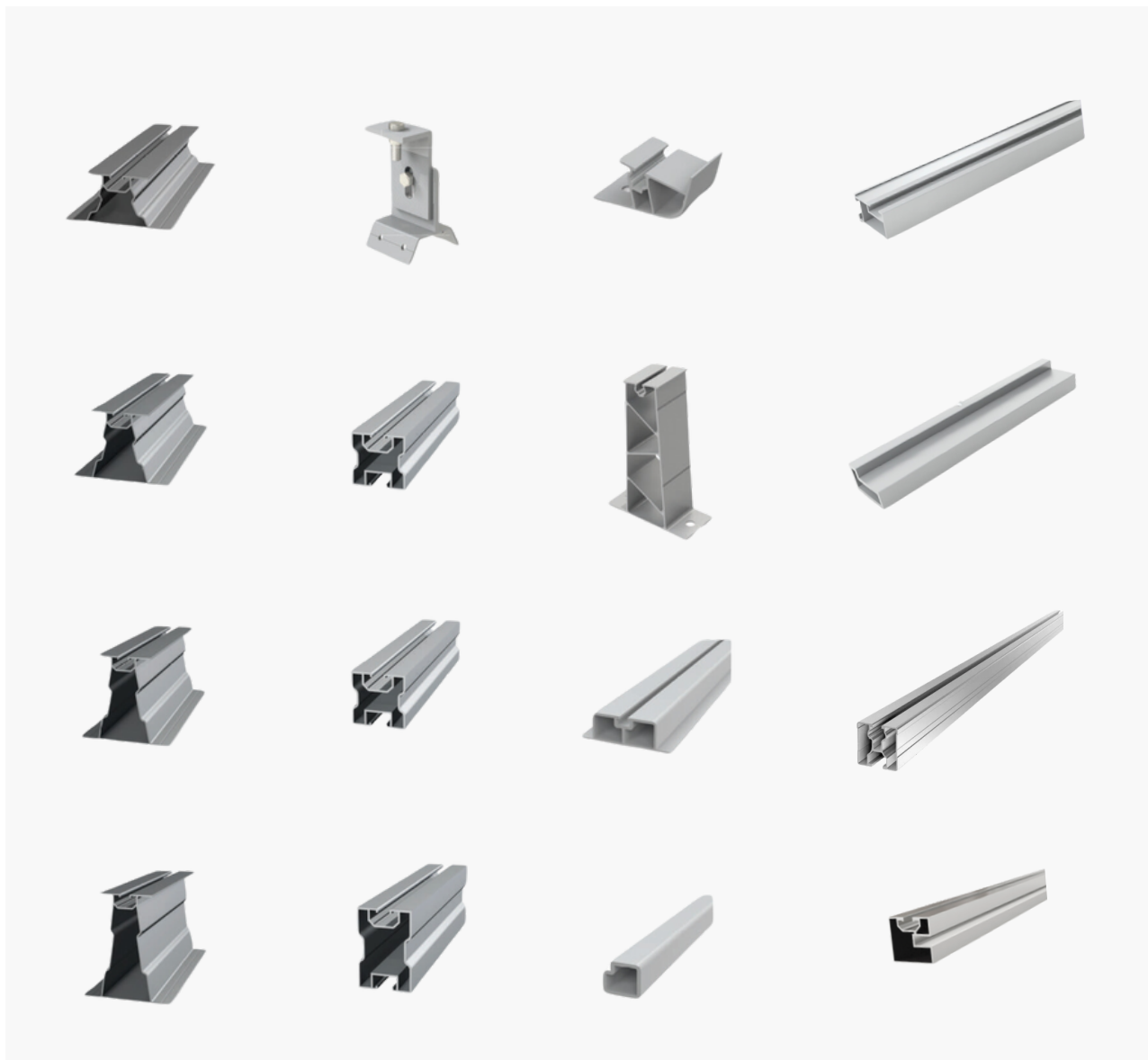
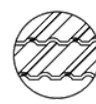
Trapezoidal



Flat & Membrane



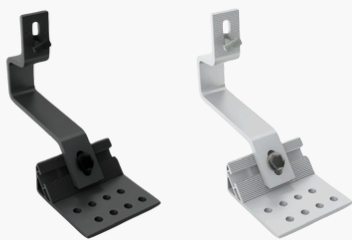
Tile





## *Mounting Clamps & Roof Hooks*

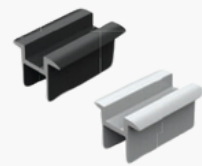
Roof Hook



Mid Clamp



Mid Clamp



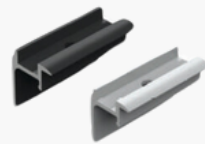
Roof Hook



End Clamp



End Clamp



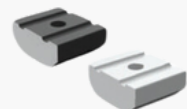
End Clamp



Mid Clamp



Connector



Mid Clamp



End Clamp



Connector



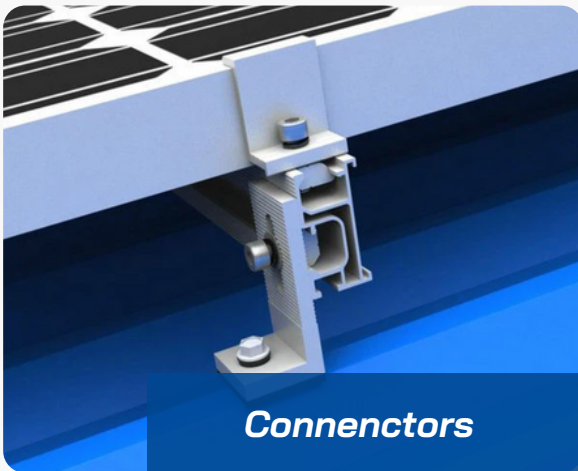
## Customized Components



**Brackets**



**Clamps**



**Connenctors**



**Rails**



**Roof Hooks**



**Accessories**

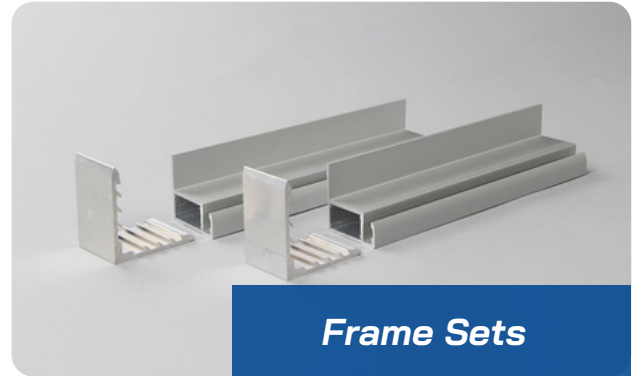


# Solar Module Frames

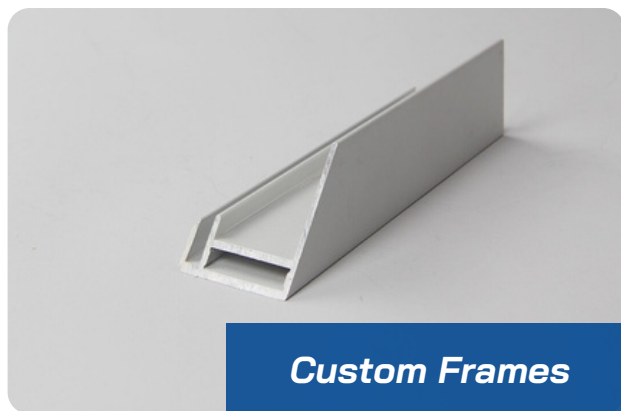




**Standard Frames**



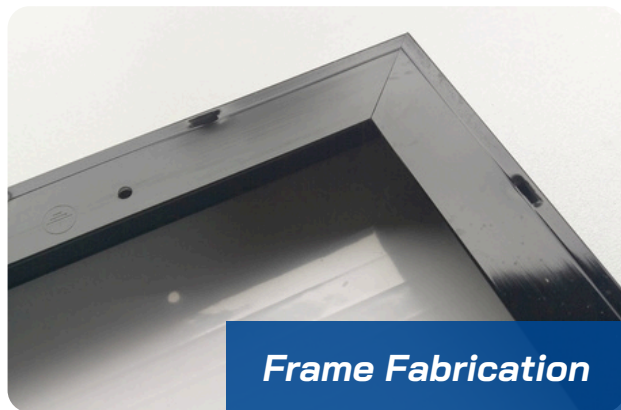
**Frame Sets**



**Custom Frames**



**Corner Keys**



**Frame Fabrication**



**Frame Fabrication**



**Frame Machines**



**Custom Fabrication**

# Certifications

## Quality Standards

Seral co-owns two of the leading aluminium extrusion manufacturing plants in Turkey with over 40,000m<sup>2</sup> (430,000ft<sup>2</sup>) closed production area. All stages of production are assessed and certified accordance with ISO 9001:2015, TSE, Bureau Veritas and Qualanod standards in compliance with DIN 12020-2 tolerance. The anodizing process is in compliance and operates with quality certification via State of the Art Technology Lab and Qualanod license. Our powder coating line operates under Qualicoat quality standards.



TÜRK STANDARDLARI ENSTİTÜSÜ



SEASIDE





## This image shows a blank sheet of white paper with horizontal blue ruling lines. The lines are evenly spaced and run across the width of the page. There are no margins, text, or other markings on the paper.

[illegible]



## Headquarters

Varyap Meridian Grand Tower A Blok Kat:2 D:27  
İstanbul - 34746 Turkey



## Production Facilities

Plant 1 - Gebze  
Plant 2 - Ergene



## Telephone

+90 535 870 6670  
+1 323 360 8042



## Email

info@ser-al.com



## Website

www.ser-al.com